

Kontrabass - C-Dur

Erste Lage

Musical notation for the first position of the C major scale on the double bass. The scale is written in bass clef with a 4/4 time signature. The notes are G, A, B, D, E, F, A, B, C, E, G. Fingerings are indicated above the notes: 0, 1, 4 for G, A, B; 0, 1, 2 for D, E, F; 0, 1, 2 for A, B, C; 0, 2 for E, G.

Übungen auf einer Saite

G-Saite

0 1 4

Musical notation for exercises on the G string. The exercises consist of six measures of eighth notes, each measure containing a quarter rest followed by an eighth note. The notes are G, A, B, D, E, F, A, B, C, E, G.

D-Saite

0 1 2

Musical notation for exercises on the D string. The exercises consist of six measures of eighth notes, each measure containing a quarter rest followed by an eighth note. The notes are D, E, F, A, B, C, D, E, F, A, B.

A-Saite

0 1 2

Musical notation for exercises on the A string. The exercises consist of six measures of eighth notes, each measure containing a quarter rest followed by an eighth note. The notes are A, B, C, D, E, F, A, B, C, D, E.

E-Saite

0

2

Musical notation for exercises on the E string. The exercises consist of four measures of eighth notes, each measure containing a quarter rest followed by an eighth note. The notes are E, F, G, A, B, C, D, E. The piece ends with a double bar line and a 6/4 time signature.

Übungen auf zwei Saiten

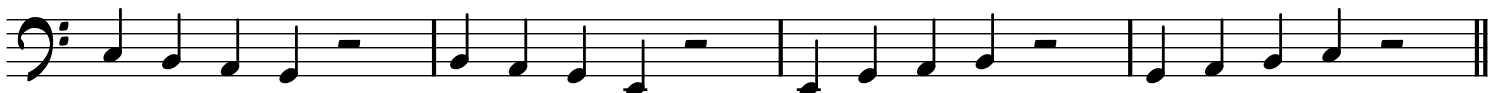
G- und D-Saite
4 2



D- und A-Saite
2 2



A- und E-Saite
2 2



Dreiklänge

D-Moll
0 2 1

A-Moll
0 2 1

E-Moll
0 2 1



E-Moll
1 0 4

B Vermindert
1 0 2



C-Dur
2 1 0

G-Dur
2 1 0

